

IDEXX Coag Dx* Analyzer

Sample Testing Quick Guide

Testing Fresh Whole Blood Samples

Activated Partial Thromboplastin Time (aPTT) and Prothrombin Time (PT)

Important: Do not collect fresh whole blood samples until the IDEXX Coag Dx* Analyzer indicates "Add Sample... Press Start."

1. Remove IDEXX Coag Dx* PT and/or aPTT cartridges from refrigerated storage and allow them to come to room temperature (15°–30°C/59°–86°F). This takes 30–60 minutes. (**Do not** open the pouch prior to use.)
2. Prepare the venipuncture site by shaving fur (if necessary) and cleansing with alcohol. Allow the site to air-dry completely, as alcohol interferes with the coagulation assay.
- * 3. On the IDEXX VetLab* Station, specify a patient and initiate a Coag Dx Analyzer test run.

- * 4. The message "Insert... Cartridge" displays on the Coag Dx Analyzer. Open and insert a room temperature PT or aPTT cartridge into the analyzer to warm (Figure 1).



Figure 1: Insert a Coag Dx PT or aPTT cartridge

Important:

Wait until the analyzer displays the message "Add Sample... Press Start," before continuing with the next step.

5. Obtain a minimum of 0.2 mL (0,2 cc) blood with a needle and plastic syringe.

You have five minutes to add the sample to the cartridge and start the test. If the message "Start... TIMED OUT" appears, you must use a new cartridge for this test.

6. **Immediately** dispense one drop of blood into the sample well of the cartridge (Figure 2).



Figure 2: Add sample to center of well

Note: A sufficient quantity of blood must be added to the center of the sample well to fill it slightly over the top (Figure 3, sufficient vs. Figure 4, insufficient). If a large drop of blood extends above the center sample well (Figure 5), use a needle to push the extra blood into the outer sample well (Figure 6).

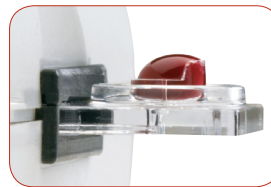


Figure 3: Sample is sufficient; meniscus protrudes slightly above sample well

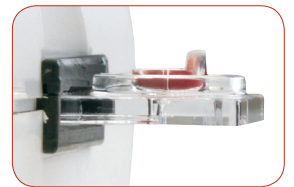


Figure 4: Insufficient sample

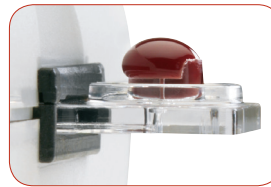


Figure 5: Sample too large

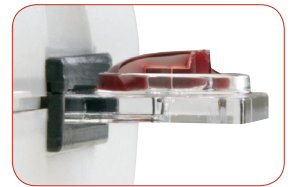


Figure 6: Sample pushed into outer well

7. Press the **Start** key. When a clot is detected, the analyzer beeps once. Final results of the test are displayed on the screen.
8. Remove the cartridge. Discard used needles, syringes, and cartridges in the appropriate waste containers.

IDEXX Technical Support:

USA/Canada/Latin America 1-800-248-2483

Europe 00800 1234 3399

Australia 1300 44 33 99

New Zealand 0800 10 20 84

Asia 886-800-291-018

Taiwan 0800 291 018

China 400 678 6682

*For a stand-alone Coag Dx Analyzer, replace steps 3 and 4 with these steps:

3. The message "Insert...Cartridge" displays on the Coag Dx Analyzer. Open and insert a room temperature IDEXX Coag Dx PT or aPTT cartridge into the analyzer to warm (Figure 1).
4. Press the **ID** key and enter the client ID, patient ID and species.

Testing Citrated Whole Blood Samples

Citrate Activated Partial Thromboplastin Time (aPTT) and Citrate Prothrombin Time (PT)

Collect blood samples **at least 5 minutes prior to** testing to allow for adequate equilibration of the sodium citrate with the sample.

Test all citrated samples **within 2 hours of collection**. Keep the sample at room temperature.

1. Remove IDEXX Coag Dx* Citrate PT and/or Citrate aPTT cartridges from refrigerated storage and allow them to come to room temperature (15°–30°C/59°–86°F). This takes 30–60 minutes. (**Do not** open the pouch prior to use.)
2. Prepare the venipuncture site by shaving fur (if necessary) and cleansing with alcohol. Allow the site to air-dry completely, as alcohol interferes with the coagulation assay.
3. Use **one** of the following methods to collect the blood sample:
 - Collect the sample directly into a 3.2% sodium citrate evacuated tube.
 - Collect the sample in a plastic (not glass) syringe and transfer it to a 3.2% sodium citrate evacuated tube.

Note: Fill the citrate tube to its stated draw volume.

4. Mix gently by inverting the tube at least 4 times.
- * 5. On the IDEXX VetLab* Station, specify a patient and initiate a Coag Dx Analyzer test run.
- * 6. The message “Insert... Cartridge” displays on the Coag Dx Analyzer. Open and insert a room temperature Citrate PT or Citrate aPTT cartridge into the analyzer to warm (Figure 1).



Figure 1: Insert a Coag Dx Citrate PT or Citrate aPTT cartridge

Important: Wait until the analyzer displays the message “Add Sample... Press Start,” before continuing with the next step.

* **For a stand-alone Coag Dx Analyzer**, replace steps 5 and 6 with these steps:

5. The message “Insert... Cartridge” displays on the Coag Dx Analyzer. Open and insert a room temperature IDEXX Coag Dx* Citrate PT or Citrate aPTT cartridge into the analyzer to warm (Figure 1).
6. Press the **ID** key and enter the client ID, patient ID and species.

7. Gently invert the evacuated tube again, 4 times, and then collect the sample from the tube using the disposable plastic pipette (Figure 2).
8. Dispense one drop of blood into the sample well of the cartridge (Figure 3).



Figure 2: Collect sample from 3.2% sodium citrate evacuated tube



Figure 3: Add sample to center of well

Note: A sufficient quantity of blood must be added to the center of the sample well to fill it slightly over the top (Figure 4, sufficient vs. Figure 5, insufficient). If a large drop of blood extends above the center sample well (Figure 6), use a pipette to push the extra blood into the outer sample well (Figure 7).

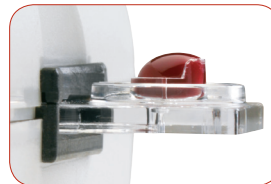


Figure 4: Sample is sufficient; meniscus protrudes slightly above sample well

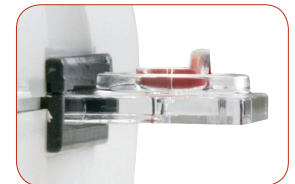


Figure 5: Insufficient sample

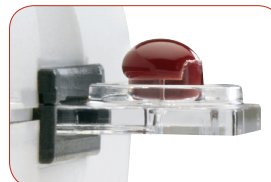


Figure 6: Sample too large

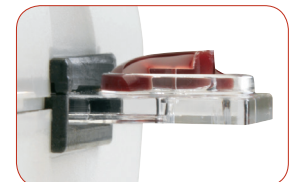


Figure 7: Sample pushed into outer well

9. Press the **Start** key. When a clot is detected, the analyzer beeps once. Final results of the test are displayed on the screen.
10. Remove the cartridge. Discard used needles, syringes, pipettes, and cartridges in the appropriate waste containers.

IDEXX Technical Support:

USA/Canada/Latin America 1-800-248-2483

Europe 00800 1234 3399 • Australia 1300 44 33 99

New Zealand 0800 10 20 84 • Asia 886-800-291-018

Taiwan 0800 291 018 • China 400 678 6682

IDEXX
LABORATORIES

One IDEXX Drive
Westbrook, Maine 04092 USA
idexx.com

06-14004-01

© 2014 IDEXX Laboratories, Inc. All rights reserved.
*IDEXX VetLab and Coag Dx are trademarks or registered trademarks of IDEXX Laboratories, Inc. or its affiliates in the United States and/or other countries.