

IDEXX xChek*: Creating a User-Defined Assay for the IDEXX Influenza A Virus Antibody Test—Other Animal Species

Creating a user-defined assay is an easy process of two tasks—editing an xChek* file to allow you to create an assay, and then creating the assay within xChek.

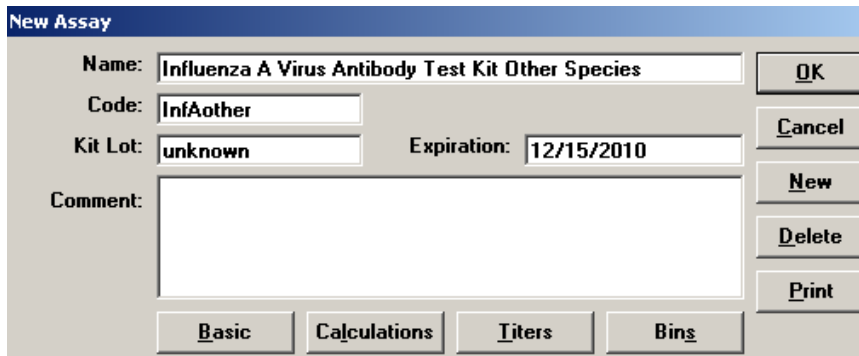
To edit the xChek.ini file:

1. From the task bar, choose **Start> Run**, and type “xchek.ini” into the text box. Click the **OK** button.
2. After the xChek.ini file opens, locate the line labeled “AllowNewAssays.”
3. If the value for that line is “0,” change it to “1.” If the value is already “1,” do not do anything.
4. Locate the section labeled [BasicGraphs], scroll to the end of the section, and then enter “InfAother=17.”
5. From the menu bar, choose **File> Save**, and then choose **File> Exit**.

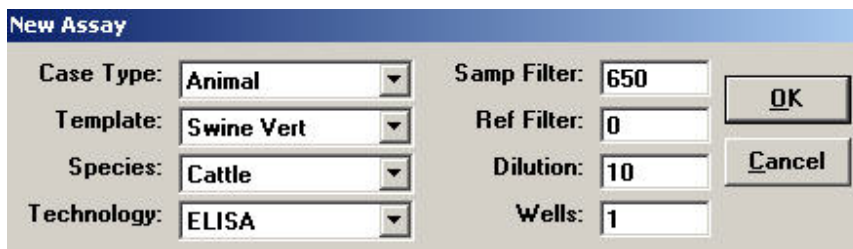
To create the assay:

1. From the task bar, choose **Start> Programs> xChek> xChek** to open the xChek program.
2. From the menu bar, choose **Database> Assays> All** to open the Assay dialog box.
3. Click the **New** button, and enter “Influenza A Virus Antibody Test Kit Other Species” into the Name field, “InfAother” into the Code field, and “unknown” into the Kit Lot field. Today’s date (mm/dd/yyyy) is automatically entered into the Expiration field.

Note: When you begin testing, update the information in the Kit Lot and Expiration fields with the actual kit lot number and expiration date.



4. Click the **Basic** button, and select or enter the following information for the respective fields:
Case Type: Animal Samp Filter: 650
Template: Swine Vert Ref. Filter: 0
Species: Cattle Dilution: 10
Technology: ELISA Wells: 1



Note: Due to a problem with selecting swine as the species type in versions 3.2 and 3.3 of xChek, the species used for this user-defined assay is cattle.

5. Click **OK** to save the settings.

6. Click the **Calculations** button, and select or enter the following information:

Formulas:

"S" Part of Ratio: Sample1

"P" Part of Ratio: None

"N" Part of Ratio: Negative

Blocking Factor: None

First Calculation:

Variable: S/N

Positive Cutoff: 0.6

Suspect Cutoff: 0.6

Comparison: <

Second Calculation:

Variable: None

Positive Cutoff: 0

Suspect Cutoff: 0

Comparison: None

The screenshot shows a dialog box titled "New Assay". It is divided into several sections:

- Formulas:** Contains four dropdown menus: "S" Part of Ratio (Sample1), "P" Part of Ratio (None), "N" Part of Ratio (Negative), and Blocking Factor (None). To the right are buttons for OK, Cancel, and Reset.
- First Calculation:** Contains four input fields: Variable (S/N), Positive Cutoff (0.6), Suspect Cutoff (0.6), and Comparison (<).
- Second Calculation:** Contains four input fields: Variable (None), Positive Cutoff (0), Suspect Cutoff (0), and Comparison (None).

7. Click **OK** to save these settings, and then click the **OK** button to save the assay to the database. You can now test for influenza A antibodies using the xChek Assay Management System.

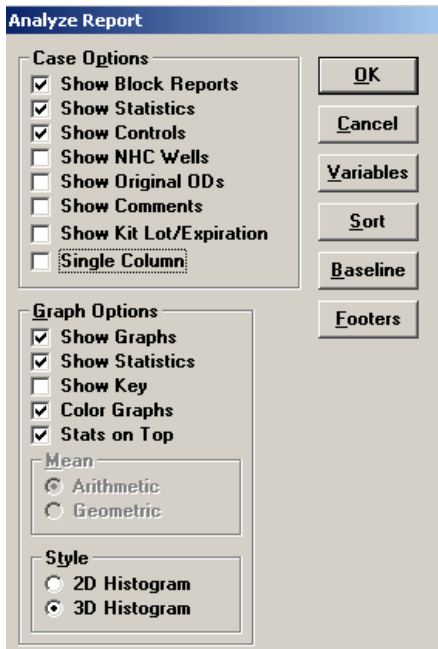
Note: xChek does not evaluate controls or results for validity when you use a user-defined assay. You must evaluate the results from each assay in accordance with good laboratory practices. To evaluate your assay validity, refer to the insert provided with the test kit.

Setting Up Additional Display Variables

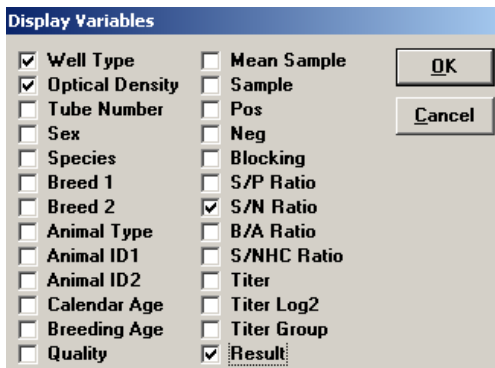
Only OD values are displayed in the reporting options for this user-defined assay. To set up additional display variables, follow the directions below.

1. From the xChek menu bar, choose **Reports> Analyze Cases** to open the Filter Criteria for Analyze dialog box.
2. Enter the desired search criteria and click **OK**. The Select Cases for Analyze dialog box appears.

3. Select the desired cases and click **OK**. The Analyze Report dialog box appears.



4. Click the **Variables** button to open the Display Variables dialog box.



5. Select the desired options and click **OK**. Click **OK** again to save the settings.

For more information, call IDEXX Technical Services at 00800 727 43399, contact your local area manager, or visit us on the Web at idexx.com.

Test With Confidence™



*xChek and Test With Confidence are trademarks or registered trademarks of IDEXX Laboratories, Inc. in the United States and/or other countries.

One IDEXX Drive
Westbrook, Maine 04092 USA

© 2011 IDEXX Laboratories, Inc. All rights reserved. • 9541-01