

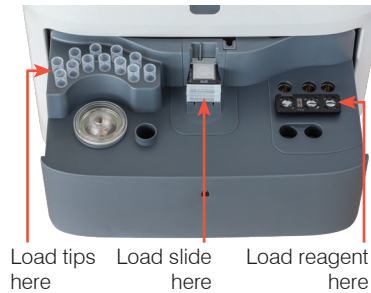
Quick Reference Guide

Storage and handling requirements

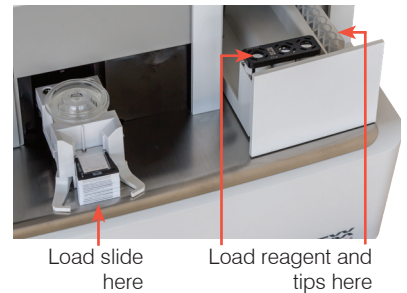
- Store in the refrigerator. **Do not freeze.**
- No warming required—run directly from the refrigerator.
- Canine C-reactive protein (CRP) slides and reagent can be stored in their pouch at room temperature for up to 8 hours. After 8 hours, store any unused materials in the refrigerator.
- Recommended sample volume:
 - Whole blood: 600–800 μL
 - Serum/plasma: 100 μL (300 μL if running with other slides)

CRP made simple—load and go

Catalyst One*



Catalyst Dx*



Frequently asked questions

Question	Answer
Is the Catalyst* CRP Test just a slide?	No, the Catalyst* CRP Test contains a single slide and a reagent (gold conjugate, wash, and mixing cup). Both components must be run together for each sample run and then discarded.
What sample types can be run on the Catalyst CRP Test?	Compatible sample types include serum, lithium heparin plasma, and whole blood using the Catalyst* Lithium Heparin Whole Blood Separator.
What species can be run on the Catalyst CRP Test?	The Catalyst CRP Test is a canine-specific assay—only canine interpretive guidelines are reported.
Can the CRP test be run with other slides?	Yes! The Catalyst CRP Test can be run alone or with other slides as part of a comprehensive patient profile. For example, you could run a Catalyst* Lyte 4 CLIP, a Catalyst* Chem 17 CLIP, and a CRP test with one patient sample. Note: CRP cannot be run with Catalyst* Total T ₄ on the Catalyst Dx analyzer.
When running with other slides, should the CRP test be loaded in a particular order?	Catalyst One: No, the CRP slide can be loaded in any order. Catalyst Dx: If there are 18 slides or fewer in the run, the CRP slide can be loaded in any order. For Catalyst Dx runs containing more than 18 slides, load the CRP slide within the first 18 slides. For more information about the slide order for other chemistries, see the <i>Catalyst Chemistry Analyzer Operator's Guide</i> .
At what range will the Catalyst CRP Test report a numerical result?	U.S. units: 0.1–10.0 mg/dL S.I./French S.I. units: 1.0–100.0 mg/L
What is the reference interval for the Catalyst CRP Test?	U.S. units: 0–1.0 mg/dL S.I./French S.I. units: 0–10.0 mg/L
What is the run time for the Catalyst CRP Test?	<ul style="list-style-type: none"> • CRP alone: <8 minutes • CRP with other chemistries: <12 minutes
Is it okay to dilute samples that are undergoing CRP testing?	When testing CRP on patients with suspected severe systemic inflammation, dilutions of the sample may be performed to avoid repeat testing when CRP values are above 10.0 mg/dL (S.I./French S.I.: 100.0 mg/L). The recommended dilution is one part serum or plasma in one part normal saline (0.9% saline). Note: Automated dilutions are not available for CRP on the Catalyst Dx analyzer.
How often can CRP tests be left at room temperature and then returned to the refrigerator?	Once at room temperature, CRP tests can be returned to the refrigerator up to 5 times as long as the foil pouch is unopened.
What if a CRP test is accidentally frozen?	Any tests suspected of being frozen should be allowed to thaw at room temperature for at least 30 minutes before use.
Should I run quality control for CRP?	There is no quality control specific for CRP. VetTrol* Control is designed for use in monitoring the precision and accuracy of the Catalyst Dx* and Catalyst One* analyzers.